

April 2009

WICHITA KENNEL CLUB, INC. NEWS FOR THE DOG FANCIER

Inside This Issue:

WKC March Gen. Mtg Minutes	3
Shelter Training	4
Art Show and Kiddie Corner	5
K-9 Cruise	6
WKC Sanctioned B Match	7

From the Editor:

- All opinions expressed or implied in this publication are those only of the author(s) of that opinion.
- The deadline for submission of articles in the newsletter is the 28th of every month.
- The newsletter is always available for download from the website:
www.wichitakennelclub.org
- Your brags or news items can be sent to:
Leanne Chase
4620 Huckleberry
Derby, KS 67037
316-788-7616

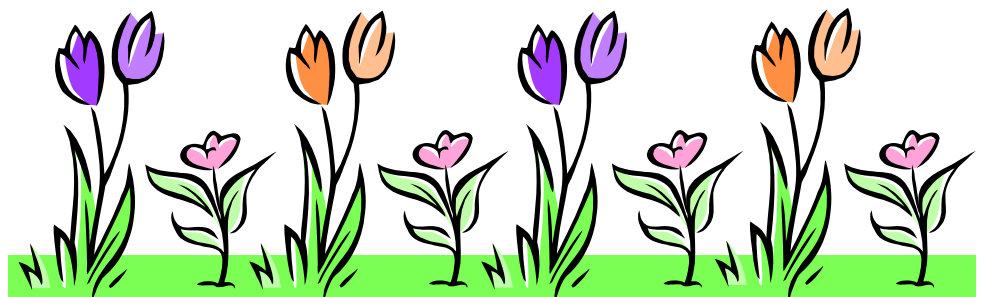
blackmagicbrt@aol.com

A Word from the Editor

Leanne Chase

Please take the time to volunteer at your Sunflower Cluster. We all have busy schedules in the next few days, but even a couple of hours can make a difference. If you are a Wichita Kennel Club member, it is important to step forward and help. If you have an area you want to volunteer in, let Kim Jennings or Treva Faires know. They are only a telephone call away!

Our show is one of the highlights of the year, and we can't do it without our member volunteers.



⌘⌘⌘ April 2009 Membership Meeting ⌘⌘⌘

Topic: 2009 Sunflower Cluster Wrap-up

Time: 7:30 PM

When: Monday, April 13, 2009

**Wichita Kennel Club
3448 North Emporia**

Join in the discussion of this year's Sunflower Cluster show—gossip, news, the good, the bad, and the ugly.



Reminder: We now have a “personalized ring” on our phone at the WKC building. So if you are at the building and **THE PHONE RINGS TWO SHORT RINGS**, feel free to answer it. The new number is: **832-2363**

EYE CLINIC AT THE SUNFLOWER CLUSTER
 Sponsored by the Wichita Kennel Club



For members of the Sunflower Cluster Clubs only and only their dogs, the CERF eye clinic will be available Friday afternoon. Dr. A.J. Quinn (retired OSU) will be our examiner. Please remember to bring information concerning your dog’s AKC number, birth date, microchip, and/or tattoo number with you. The eye clinic is located at the north end of Pavilion II (where the working and herding breeds and obedience are judged).

Cost: \$10.00 per dog

When: Friday, April 3 Time: 3:00-5:00 PM

May General Meeting

**Monday
 May 11th
 7:30 PM**



◆◆◆ Member Volunteer Opportunity ◆◆◆

If you are able to inside or outside ring steward at least ½ day for Conformation Friday through Sunday, April 3-5, at the **Sunflower Cluster**, lunch is **FREE!**

The meals are provided for workers and judges at the Sunflower Cluster. Interested? Please contact Kim Jennings at 316-733-9344 or e-mail hannakj@roseam.com

🏆🏆🏆 Member Best Junior Brag 🏆🏆🏆

At the Garden City show Jessica Chavez showed the husky she co-owns with Nick and Anne Wieland, Anik’s Cool Jesse, in Breed and for the first time in Juniors. She did a fantastic job and was awarded Best Junior for the first time. She won first again on Sunday. Ashlee also placed first on Saturday and second on Sunday.

Quello E Tovia Jose Marti owned by Nola Foulston, CJ Rieg, Jane and Jessica Chavez was awarded Winners dog both days. That’s my Adorabull Godiva was awarded Best of Winners, Best of Opposite Sex and Best Bred by Exhibitor in Havanese on Sunday.

~~~~~ Wichita Kennel Club General Meeting Minutes ~~~~~  
March 9, 2009

Meeting called to order at 7:33 PM. (Meeting minutes were not taken last month)

**Corresponding Secretary:** Pat Deshler received an e-mail from AKC telling WKC how we might respond to the Wichita City Council's BSL.

The Oklahoma HB1332 passed the House without changes and is headed for the Senate. This bill will impact anybody who shows or travels with dogs to Oklahoma.

**Treasurer:** Presented a bill from Leanne Chase for newsletter expenses for \$22.78. Membership voted to pay the bill.

**Art Show:** The art is now hanging at City Arts and Century II. It looks good! BIS was awarded to a bronze sculpture of an Italian Greyhound.

The art will be moved on April 1<sup>st</sup> and stored overnight in van(s) then taken to the Coliseum on Thursday morning. Help is needed on Wednesday, Thursday and Sunday when the art is repacked in the van(s).

**Members' Night:** If there is a "nearby" three-day show, we will NOT have Members' Night on the Thursday before because attendance would be too low. Leanne will print a reminder in the next newsletter that there will NOT be a Members' Night on April 2<sup>nd</sup>.

**Sunflower Cluster:** Show plans are going well. We still need INSIDE ring stewards. Tree Top Nursery will be donating the use of flowers & plants in exchange for an ad in the Sunflower Cluster catalog.

**New Business:** Deborah Franz thanked the WKC members for the flowers and card (and well-wishes). She is doing better!

Another **Microchip Clinic** is planned for approximately 2-3 weeks after the Sunflower Cluster Shows, depending on the schedule of the vets who volunteer.

**Yappy Days:** is scheduled for the weekend before our shows (March 28<sup>th</sup>). Patty & Bob Behrens will work the booth all day. WKC is donating two certificates to our next microchip clinic for a drawing. We can also advertise the microchip clinic there.

KETCH will be bringing a group of people to the Sunflower shows for tours (approx 9 clients and 3 employees). WKC should be sure to include these tours in our ACK package for club compliance criteria.

At 8:05 the meeting was adjourned.

Kim Jenning  
Recording Secretary

## **South Central Regional Animal Sheltering Training**

Hello everyone! Please save the date of April 11th for the first in a series of regional training exercises held by the Kansas State Animal Response Team.

This will be a tabletop exercise in which a simulated disaster affects our region and our task is to set up emergency animal shelters and coordinate the animal response for our region. Eric Thompson will be leading this exercise. Eric is an Animal Control specialist, Code 3 Associate and member of the Equine Emergency Response Unit.

This training will take place at Camp Hiawatha (the Salvation Army Camp) at 1601 W 51st St N Wichita, KS 67204 (316) 838-7871

We will begin at 12:30 pm and last for 3-4 hours. Space is limited and will be restricted to the first 100 people. Please register at KS TRAIN at <https://ks.train.org> Reference course number 1016624 (Kansas State Animal Response Team Regional Training) If you have problems registering at KS TRAIN, please email your registration to [i.concurr@gmail.com](mailto:i.concurr@gmail.com), although we very much prefer the KS TRAIN option.

Christen L. Skaer, DVM  
Skaer Veterinary Clinic  
Director/President Kansas State Animal Response Team  
Director/President Sedgwick County Animal Response Team

## **Animal Cruelty Cases in Sedgwick County**

**By Nola Foulston**

We have been strictly monitoring the animal cruelty cases in Sedgwick County. In fact, I am receiving personal calls when a situation arises. The police are most efficient in dealing with these cases, and we have the support of Kay Johnson and the city team. We have prosecuted several cases with excellent results. All animal cruelty cases (felonies) are assigned to me and I monitor those cases for evidence retrieval and for any pleas that might be taken. We have a policy that we will not reduce any charges where the facts support the filing of the complaint. In addition, we will not allow any person charged with animal cruelty to be placed on Diversion in our office. We have made excellent breakthroughs, and we have drawn positive assistance from emergency vets, KState (who does the necropsy) and other participants in the law enforcement/environmental community. This awareness continues to grow as our community becomes more educated.

Recently, we had a case out of Derby where two dogs were starved. One had to be euthanized and the other was cared for at the shelter. The two owners, husband and wife, pled guilty as charged. The case is before the court for sentencing. We have asked for a fine, jail time and restitution costs for expenses in caring for the surviving animal. In this case, we gave the court photos of the animals so that he could see the extent of harm that a human can cause. This was very impactful.



## ART SHOW MOVING VOLUNTEERS NEEDED

First, a big **thank you** to you for all your help to date!

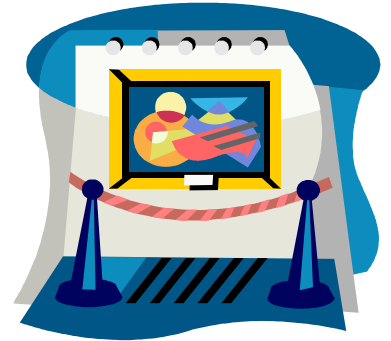
Our next job will be to move the art on Wednesday April 1st, from Century II before they lock up at 5 PM. CityArts is open later. We should go to Century II around 4:00 PM. We need to load the works from both locations into a van to be transported out to the Coliseum early on Thursday morning. We have arranged to borrow a big van from Parks Motors again, so no one has to tie up their own vehicles. If there are some among us who will have an empty van, I am sure we can use it.

I hope you can all make it. As always many hands make this task happen quickly & easily. **Please let us know if you can make it.**

Wednesday evening at 5:30, the walls for the Art Show are going up. So if you want to join in the construction, please come on out to Pavilion 1.

Don't forget that Sunday, all of the artwork has to be taken down and transported back to CityArts. We'll need your help then, too.

Thanks! Pat & Liz



## Sunflower Cluster Kids Corner Information and *Volunteers NEEDED*

**If your Club has information about it's activities and classes, please feel free to bring that info to the 'Kids Corner' and we'll hand it out.**

**ALSO: If you do rescue, for any breed, that info is much appreciated too. We get lots of people asking about various breeds and try to steer them to rescue as well as reputable breeders. I'd rather someone talked to someone and found out a \_\_\_\_\_ breed of dog wasn't for them before they get a pup and don't want it, as it gets up to 200 pounds, or needs exercise, or isn't good with kids, etc.**

**Thanks and lets make Sunflower Cluster '09 the best ever!**

**Kat Farres**

**Member SKC HKC WDTC WKC**

**Kids Corner Coordinator Sunflower Cluster**

**ozbelgnz@swbell.net**



## Thought about a Week's Caribbean Cruise Next March? Thought about Attending Some Dog Seminars?

By Mili Dold

Why not combine the two – as in the 6<sup>th</sup> Annual K-9 College Cruise next March? I just got back from such a trip and thought I'd share it with you. Brunswick Tours in conjunction with the Lancaster Kennel club have been offering this trip for five years, but they have always conflicted with the closing of our April shows.

We flew into Ft. Lauderdale the day before boarding the ship. I always do this to avoid any stress from delayed flights. The Hilton picked us up at the airport. When we arrived at the hotel, the Brunswick people (Bernese Mt. Dog people) were there to greet us and to hand us our large, zippered tote bags (well used during the week), the week's lecture schedule, a booklet on ship procedures, a layout of the ship, and our K-9 ID badges. There were 180 or so in our group (judges, breeders, obedience and agility people, exhibitors, and lecturers). Two buses arrived at the hotel in the morning to start ferrying us (with our luggage) to the docks. After everyone ID'd their big luggage, we took our carry-ons and boarded the ship for the check-in procedure. Everyone had already gone online at home using a credit card to set up a pass card account with the cruise line. You were expected to have your card on you at all times, as this card was used to open your cabin door, to check out and back in when you left the ship on shore excursions as well as in the casino, gift shops, to book short excursions, to buy drinks, bingo cards, etc. You cleared your account at the end of the cruise.

Lecturers were Dr. Robert Van Hutchison on "K-9 Reproduction" and "K-9 Pediatrics"; Dr. Ronald Schultz of the U. of Wis. on "Vaccination Protocol" and "K-9 Disease"; Corky Vroom on "Beating the Pros" (his wife, an AKC rep., was also there); Pat Hastings on "Puppy Puzzle" and "Tricks of the Trade"; Dr. Carmen Battaglia on "Breeding Better Dogs," "Puppies and Development," and "K-9 Structure & Movement, Pedigree Analysis"; Dr. Danika Bannasch on "Pitfalls and Genetic Testing in Breeding Programs"; Linda Arndt on "Holistic Nutrition" and "Preventing and Treating Developmental Orthopedic Disease"; and Dr. Stanley Coren on "How Dogs Think: Understanding the K-9 Mind" and "Dogs and People: A Historical Bond"; and Kaye Ames on "Reiki, Unleash the Energy." In addition there was a K-9 cocktail party, a Breeder's Symposium, a Judge/Exhibitor workshop, a K-9 fashion show (or what to wear in the ring), Puppy Pursuit (K-9 trivia), and Dog Show at Sea – the competition being done with dog photos sent in ahead of time and cleverly reproduced on a large screen. It's a fun-filled event that raises money for a K-9 charity (the choice of the Best in Ship winner). We had classes all day on the three days we were not in our Caribbean ports (Cozumel, Costa Maya, Belize, and Isle Roatan, Honduras). On those days we had shore excursions or spent a quiet day by one of the pools.

In addition to the above, there were the usual ship activities: music, dancing, karaoke, bingo (I won \$1,000), the casino, champagne art auction, arts and crafts lessons, library, movies, and variety shows each evening. All this and good food, good service, and making new friends.

The 2010 cruise itinerary will be Colon (Panama), Limon (Costa Rica), and Belize. The 2009 interior "kennels" were \$949 per person, double occupancy; ocean view was \$1,099 per person, double occupancy, and balcony kennels were \$1,339 per person. Adding a third or fourth person reduces the rate considerably. We had four people in our balcony kennel, and I would do it again. Our Hilton cost with four to a room was \$89 each (Florida hotels are expensive!). If you want to go 1<sup>st</sup> class, Brunswick can quote you the suite rates (1-800-979-8687). We also took out optional travel insurance at \$129 per person.

Call me, if you would like more information about the cruise.

**WICHITA KENNEL CLUB, INC.  
SANCTIONED B MATCH**

Saturday, April 4, 2009

MATCH TIME ½ Hour after Best in Show

ENTRY FEES \$8.00 Pre-Entry, \$10.00 On Site

PRE-ENTRIES CLOSE Monday, March 30, 2009

ON-SITE ENTRIES 12:00 PM to 4:00 PM

CONFORMATION CLASSES 3-6 mos, 6-9 mos, 9-12 mos  
Open, Miscellaneous, FSS, Junior Showmanship

MAKE CHECKS PAYABLE TO Arleen Berry  
8310 Brookhollow  
Wichita, KS 67206-2308

INFORMATION Arleen Berry or Cathy Robinson  
(316) 686-8558 [shilohkennel@yahoo.com](mailto:shilohkennel@yahoo.com)

**NOTE: JUDGES WILL JUDGE ALL BREEDS WITHIN A GROUP, THEN THAT GROUP.**

**PRE-ENTRY**

BREED \_\_\_\_\_ CLASS \_\_\_\_\_ SEX \_\_\_\_\_

DOG'S DATE OF BIRTH \_\_\_\_\_ REG # \_\_\_\_\_

NAME OF DOG \_\_\_\_\_

NAME OF OWNER \_\_\_\_\_

OWNER'S ADDRESS \_\_\_\_\_

CITY \_\_\_\_\_ STATE \_\_\_\_\_ ZIP \_\_\_\_\_

PHONE # \_\_\_\_\_ E-MAIL \_\_\_\_\_



## **Wichita Kennel Club Officers and Board**

Treva Faires,  
President

David Crump, Vice  
President

Tom Chase,  
Treasurer

Kim Jennings,  
Recording Secretary

Pat Deshler, Corres.  
Secretary

Milli Dold, AKC  
Delegate

Milli Dold, Resident  
Agent, State of  
Kansas

Arleen Berry  
Diane Kilts  
Gregg LaMar  
Larry Moody  
Hank Price

**We're on the Web!**

*See us at:*

[www.wichitakennelclub.org](http://www.wichitakennelclub.org)

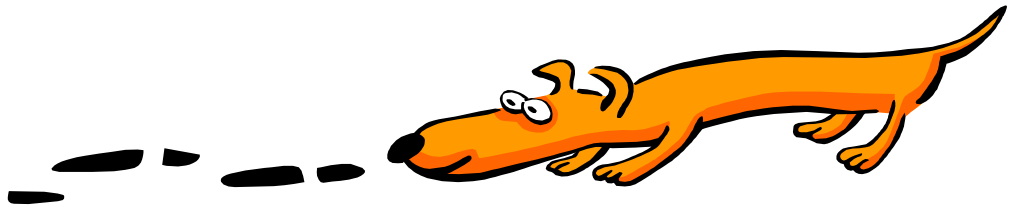
## **Good for Your Dog Good for Your Breed.**

The benefits of feeding Purina brand dog foods go beyond great food and nutrition. Now, by simply clipping the weight circles on Purina bags you can support the valuable programs and research projects of the AKC Canine Health Foundation and the annual Art Show at the Dog Show.

You can participate in this valuable program by collecting weight circles and sending them to:

**Treva Faires  
244 Fairway Circle  
Andover, KS 67002  
Phone 316/733-5855**

Your weight circles will support the AKC Canine Health Foundation and the Art Show at the Dog Show. That means funding for the health of Dogs and supporting the Sunflower Cluster's project, the 23rd annual Art Show at the Dog Show.



**WICHITA  
KENNEL  
CLUB INC.**

Leanne Chase, Editor  
4620 Huckleberry  
Derby, KS 67037

